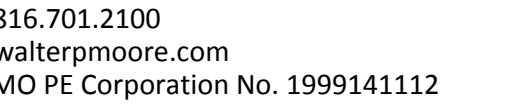


WORNALL ROAD IMPROVEMENTS

MAY 2021





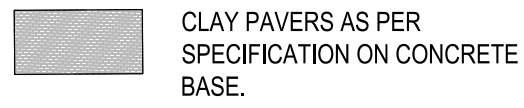
PROJECT NAME

CITY PROJECT NO. 89008516
FEDERAL PROJECT NO. STP-3301(509)

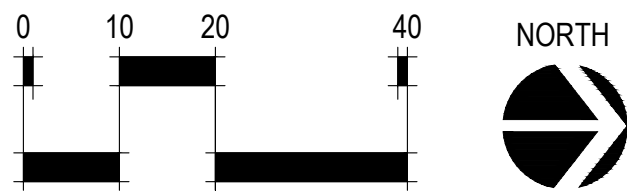
[illegible]

12 MARCH 2021

Copyright © 2021 WALTER P. MOORE AND ASSOCIATES, INC.



- NOTES:
 1. 75TH & WORNALL CROSSWALKS: BASIS-OF-DESIGN FOR NORTH, SOUTH AND WEST CROSSWALKS IS ENNIS-FLINT TRAFFICPATTERNS WITH TP41 BORDER AND HERRINGBONE PATTERN INFILL OVER A GREY OR BLACK BACKGROUND. THE WALDO KCMO LOGO MAY BE ALIGNED WITHIN EACH CROSSWALK OR CENTERED WITHIN THE MIDDLE OF THE INTERSECTION.
 2. TROLLEY TRACK TRAIL CROSSWALKS AT 75TH STREET, 74TH TERRACE, AND 74TH STREET: BASIS-OF-DESIGN IS ENNIS-FLINT TRAFFICPATTERNS WITH TP41 BORDER AND HERRINGBONE PATTERN INFILL OVER A GREEN BACKGROUND. THE WALDO KCMO LOGO OR OTHER GRAPHICS MAY BE ALIGNED WITHIN THE CROSSWALK.
 3. THE FINAL DESIGNS WILL BE REVIEWED AND APPROVED BY THE OWNER AND WALDO CID PRIOR TO BIDDING.



LEGEND

- SOIL FILLED STORMWATER MODULES
- 2-1/2" STORMWATER DISTRIBUTION PIPE
- 4" UNDERDRAIN COLLECTION PIPE
- CLAY PAVERS AS PER SPECIFICATION ON CONCRETE BASE.



Walter P Moore and Associates, Inc.
1100 Walnut, Suite 1825
Kansas City, Missouri 64106

816.701.2100
walterpmoore.com
MO PE Corporation No. 1999141112



PROJECT NAME

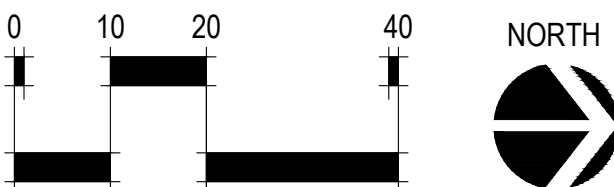
WORNALL ROAD
IMPROVEMENTS
74TH STREET TO
79TH STREET
KANSAS CITY, MISSOURI
CITY PROJECT NO. 89008516
FEDERAL PROJECT NO. STP-3301(509)

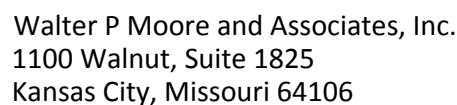
PROGRESS DRAWINGS
NOT FOR CONSTRUCTION

NO. DATE	SUBMITTALS
DESIGNED BY	E.E.N./C.D.P.
REVIEWED BY	C.D.P.
DRAWN BY	E.E.N./M.J.H.
PROJECT NUMBER	M08-18002-00
DATE	12 MARCH 2021
SHEET TITLE	

SITE FURNISHING
PLAN

SHEET NUMBER





816.701.2100
walterpmoore.com
MO PE Corporation No. 1999141112

IN ASSOCIATION WITH

vireo

Landscape Architecture | Planning | Design

PROJECT NAME

KANSAS CITY, MISSOURI

CITY PROJECT NO. 89008516
FEDERAL PROJECT NO. STP-3301(509)

NO.	DATE	SUBMITTALS
-----	------	------------

[illegible]

DESIGNED BY

E.E.N./C.D.P.

REVIEWED BY

C,D,P.

DRAWN BY

E.E.N./M.J.H.

PROJECT NUMBER

M08-18002-00

DATE _____

12 MARCH 2021

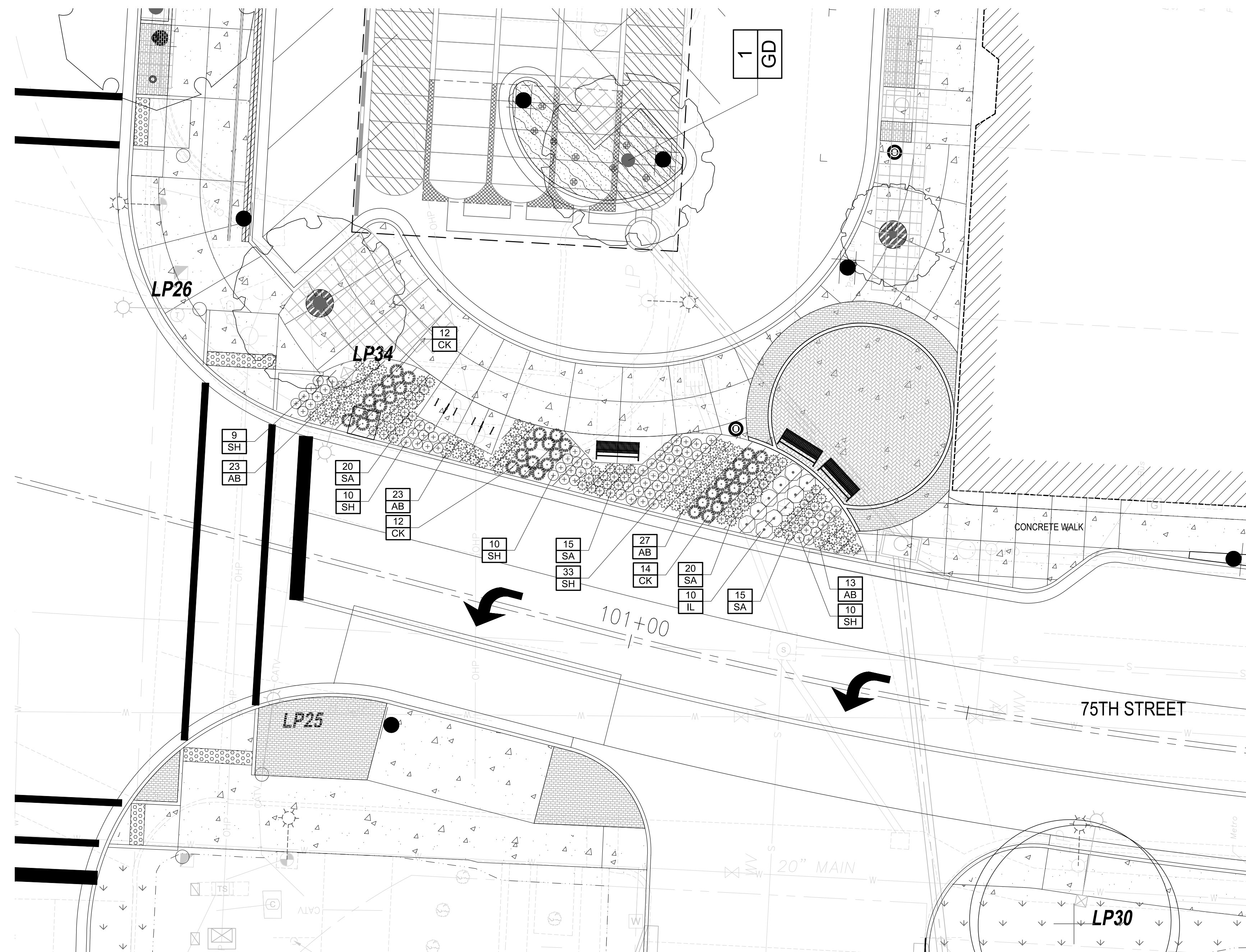
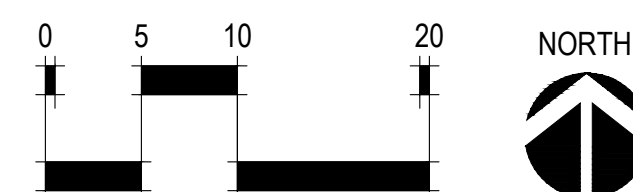
SHEET TITLE

LANDSCAPE
ENLARGEMENT STA
34+00 TO 38+00

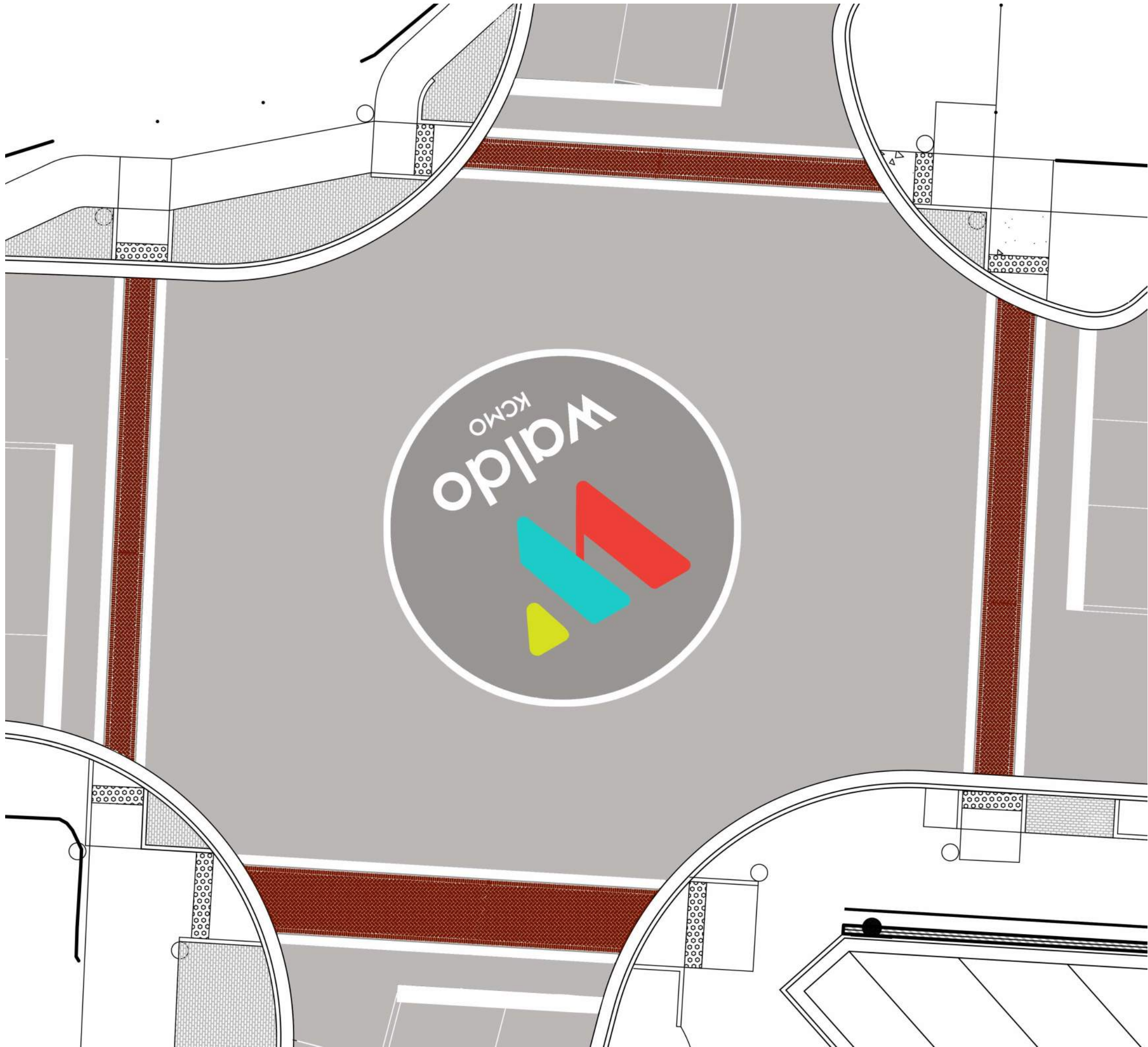
SHEET NUMBER

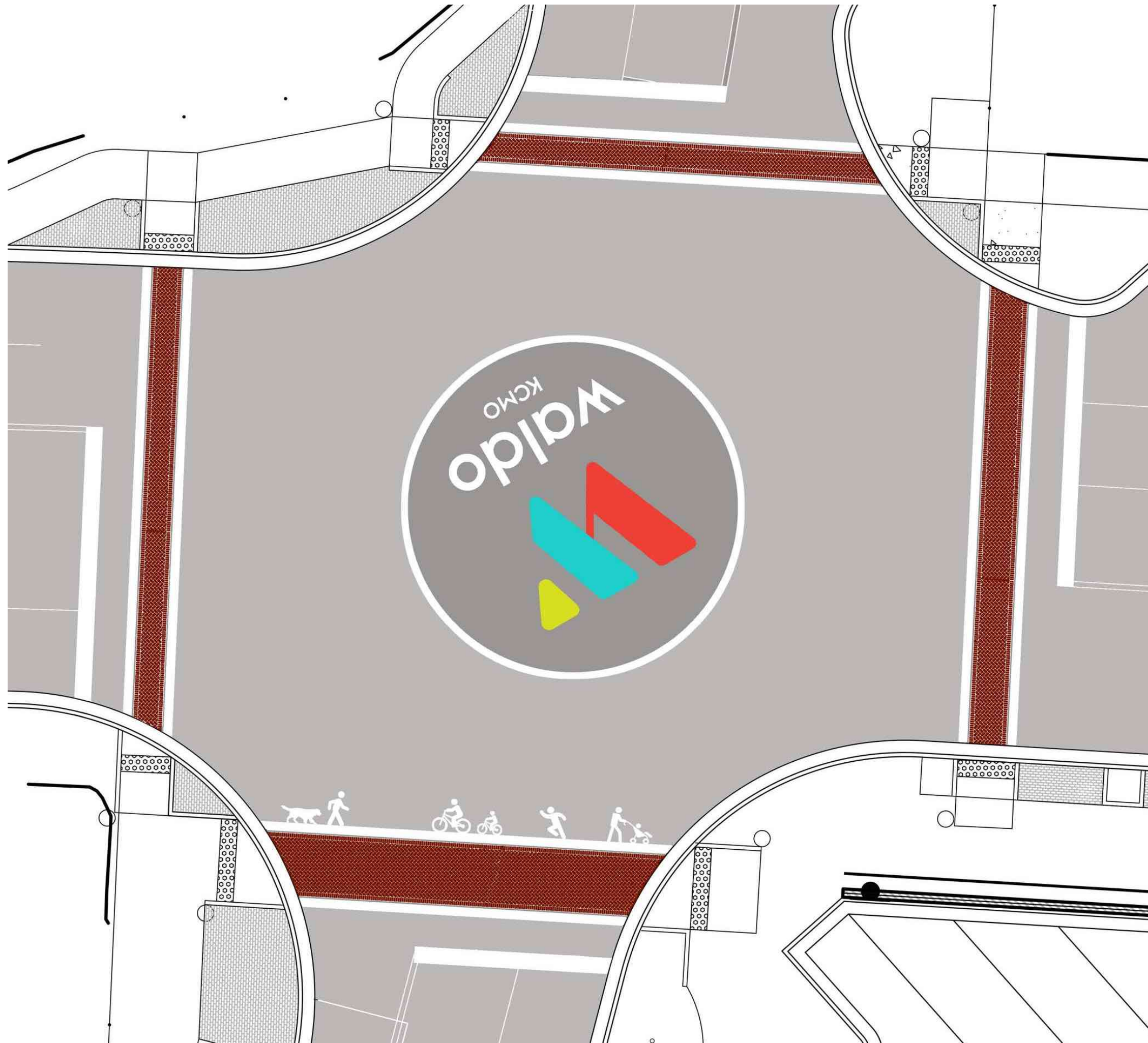
209 OF 228

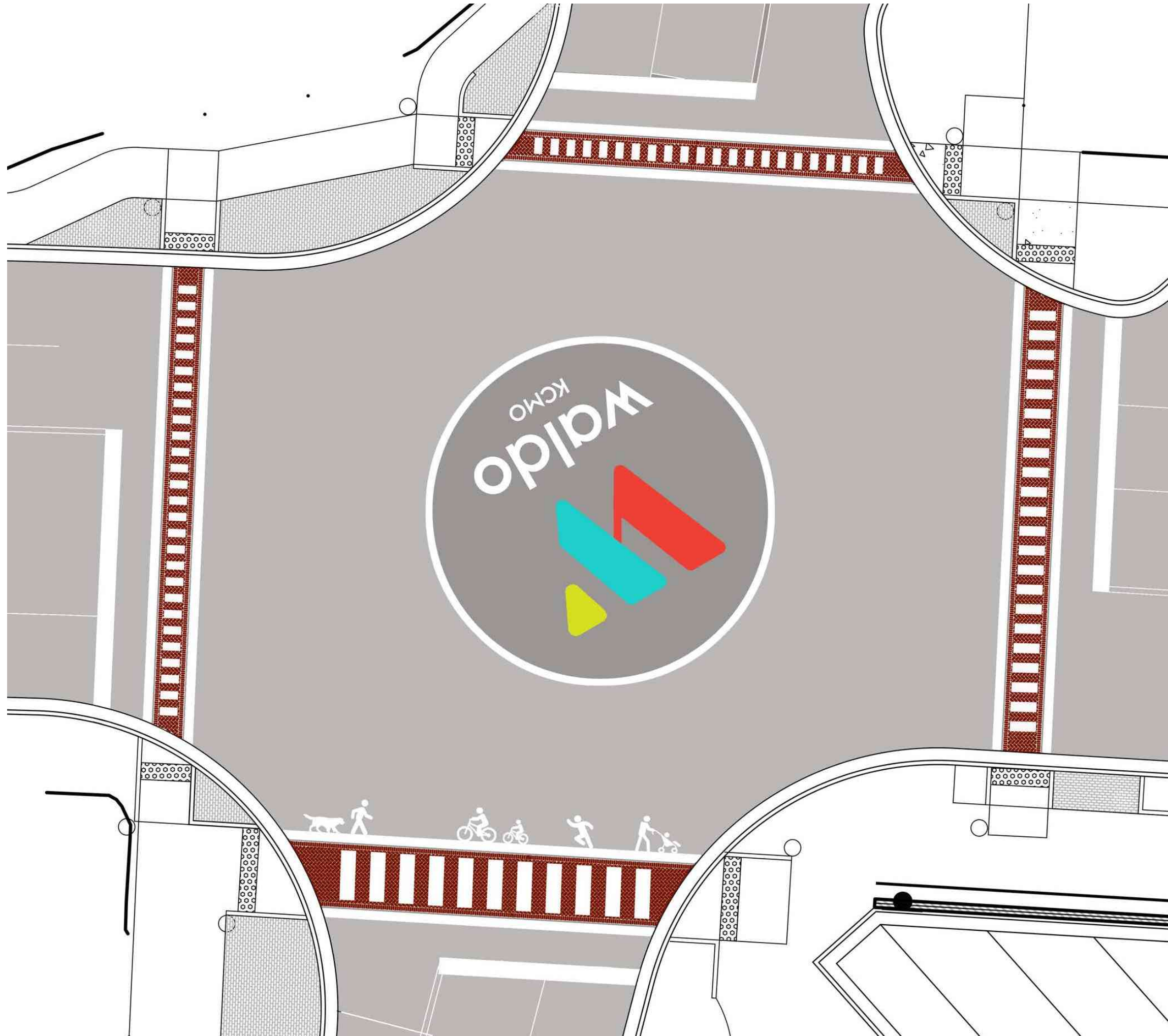
Copyright © 2021 WALTER P. MOORE AND ASSOCIATES, INC.



WORK 14, JUL 1 - 4:10pm
 H:\p-17133 worndll rd-74th to 79th\04_Dwg\CD\Sheets\150 LANDSCAPE ENLARGMENT.dwg









TREE GRATES



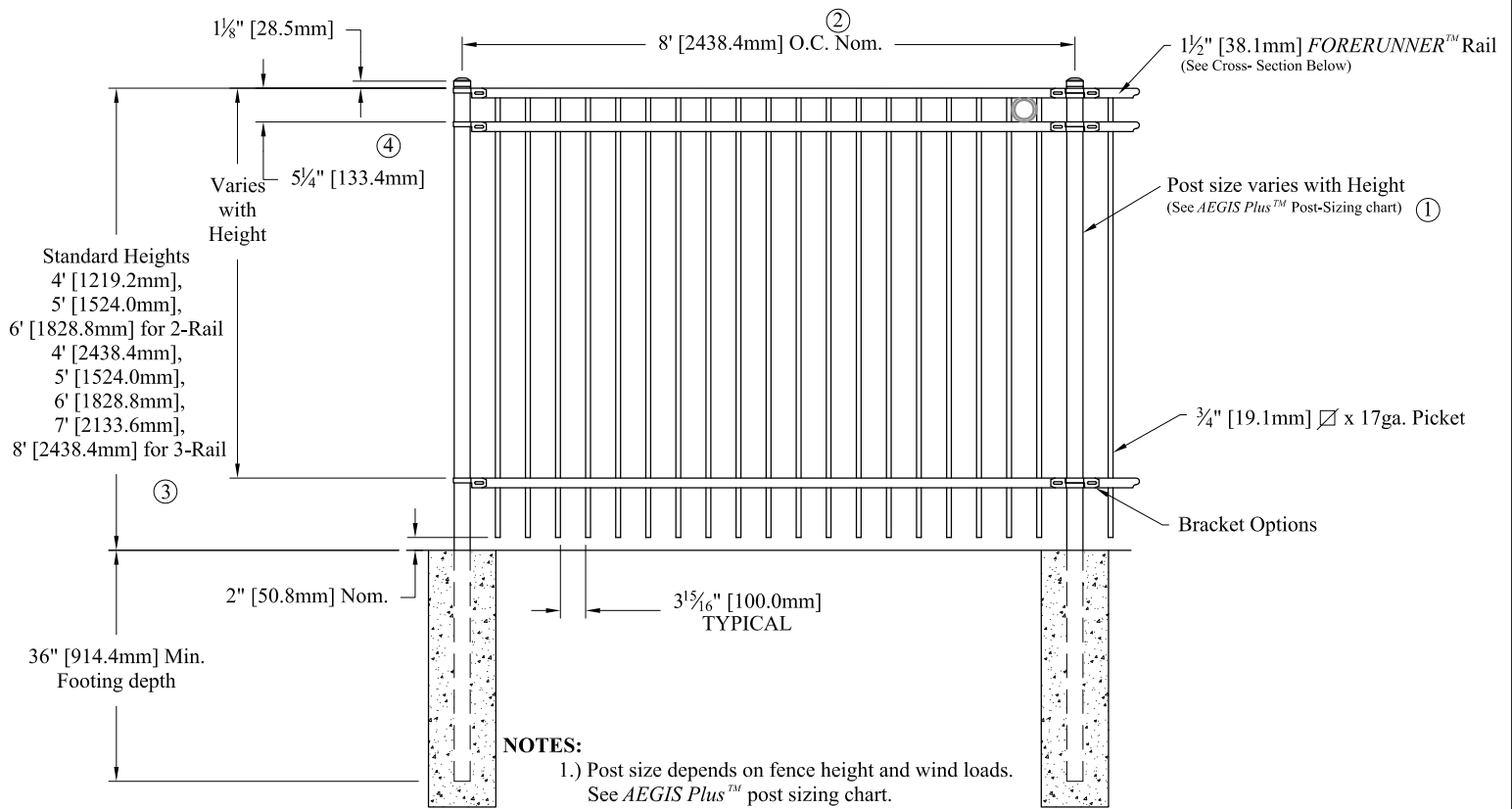
BENCH AND TRASH RECEPTACLE



BIKE RACKS AND ACCESS CONTROL



FENCING AND BOLLARDS

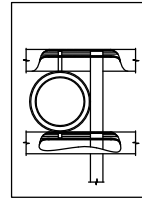


NOTES:

- 1.) Post size depends on fence height and wind loads. See *AEGIS Plus™* post sizing chart.
- 2.) Panels also available for 6' on center post spacing
- 3.) Additional heights available on request
- 4.) Third rail optional (Required with rings, See Detail).

RING OPTION

Held in place with upper and lower internal retaining rods to eliminate unsightly external fasteners.

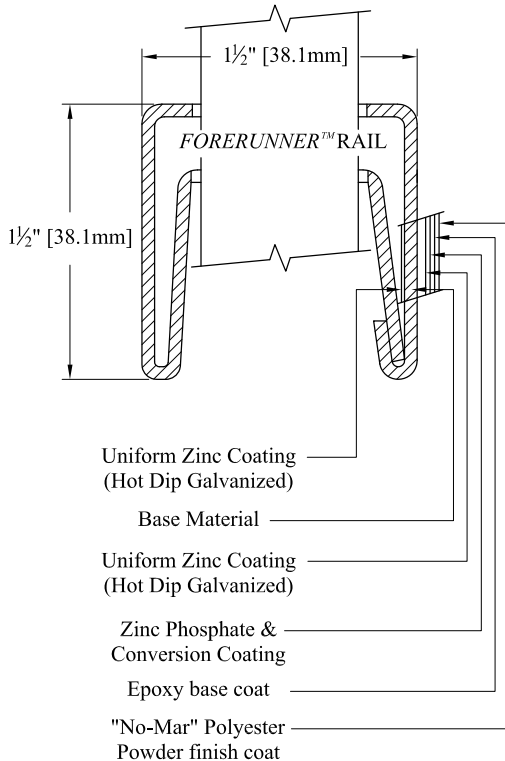
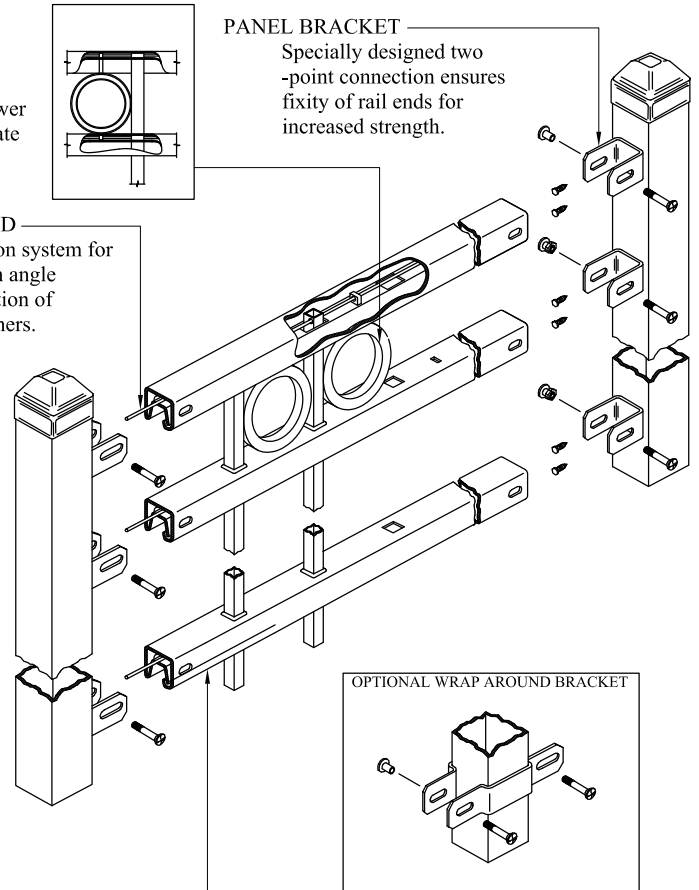


PANEL BRACKET

Specially designed two-point connection ensures fixity of rail ends for increased strength.

INTERNAL RETAINING ROD

Variable pitch connection system for ease of installation, high angle bias ability and elimination of unsightly external fasteners.



FORERUNNER™ RAIL

Double-walled "U"-Channel
 Specially formed high strength architectural shape.

Values shown are nominal and not to be used for installation purposes. See product specification for installation requirements.

COMMERCIAL STRENGTH STEEL

Title: **AEGIS PLUS MAJESTIC 2/3-RAIL W/RING OPTION**

DR: KMc SH . 1 of 1 SCALE: DO NOT SCALE

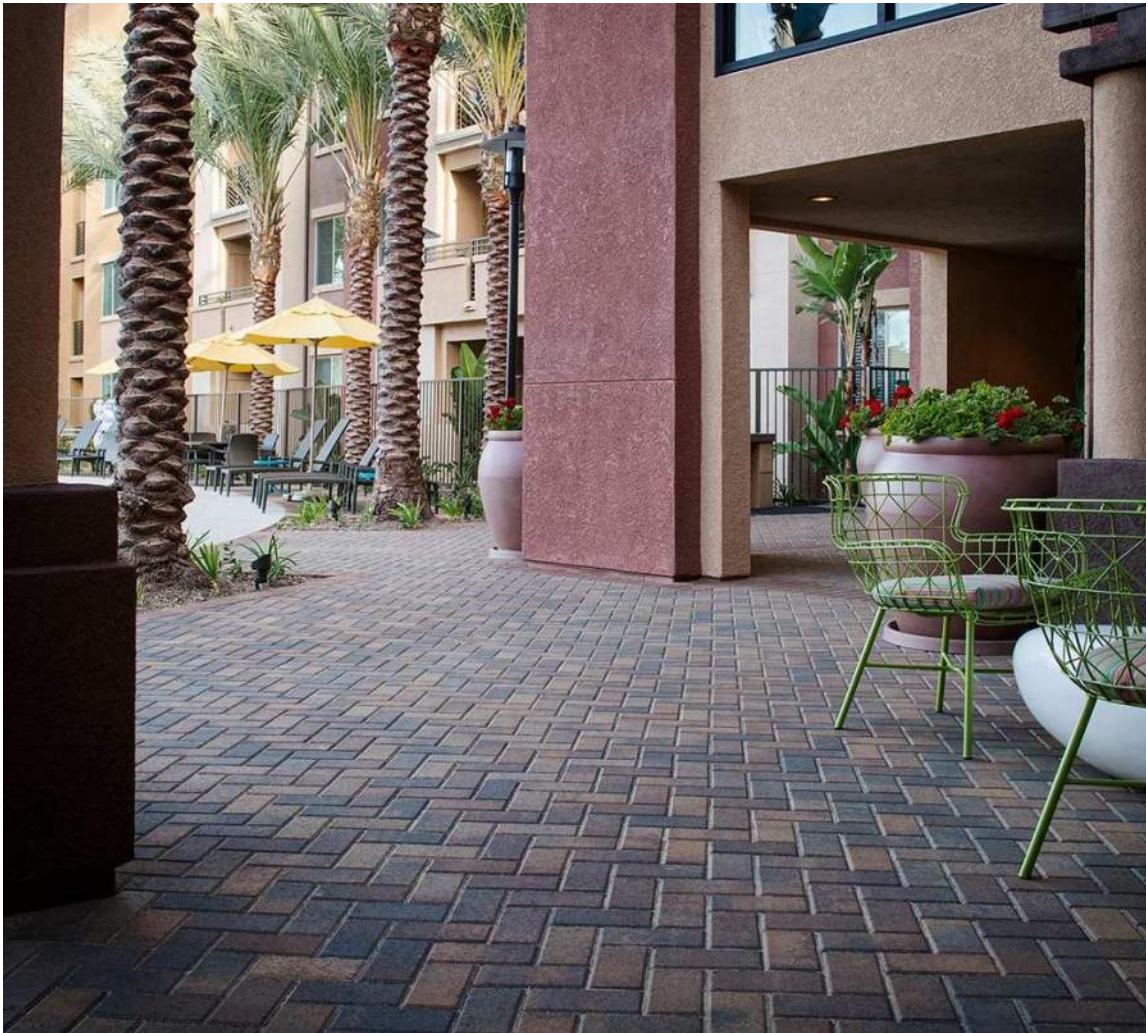
CK: Date 6/20/10 REV: F



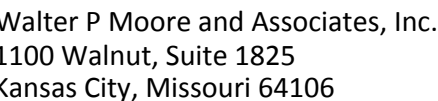
AMERISTAR®

1555 N. Mingo
 Tulsa, OK 74116
 1-888-333-3422
 www.ameristarfence.com

1MISO



BRICK PAVERS



816.701.2100
walterpmoore.com
MO PE Corporation No. 1999141112

IN ASSOCIATION WITH

Landscape Architecture | Planning | Design

PROJECT NAME

KANSAS CITY, MISSOURI

CITY PROJECT NO. 89008516
FEDERAL PROJECT NO. STP-3301(509)

NO.	DATE	SUBMITTALS
-----	------	------------

55N/ODD

E.E.N./C.D.P.

E.E.N./C.D.P.

REVIEWED BY

C.D.P.

DRAWN BY _____

E.E.N./M.J.H

PROJECT NUMBER _____

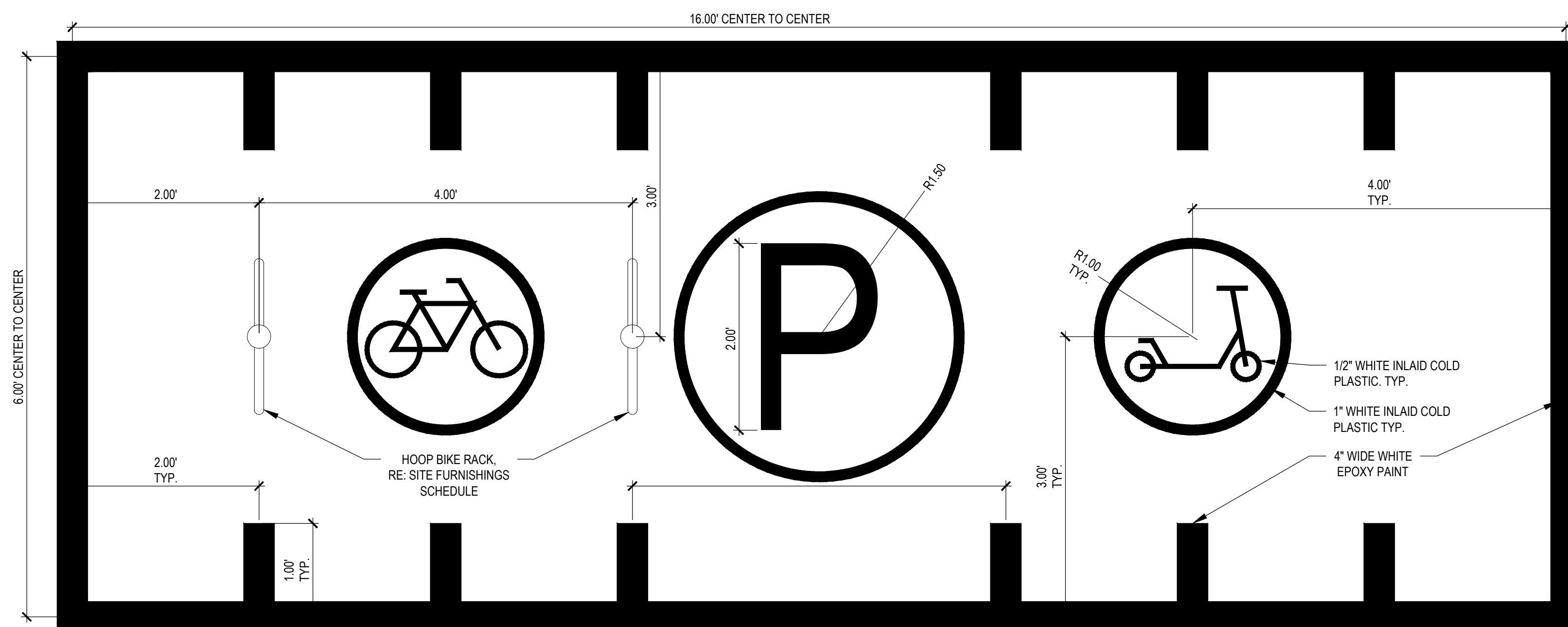
M08-18002-00

DATE _____

12 MARCH 2021

SHEET TITLE

SHEET NUMBER _____



MOBILITY PARKING AREA NOTES:

1. BOUNDARY AND PARKING SPACE PAINT SHALL BE 4" WIDE.
2. ALL PAINT SHALL MEET APWA-KCMO SEC. 2306 FOR INLAID COLD PLASTIC SYMBOLS AND EPOXY STRIPING.
3. PAINT COLOR SHALL BE WHITE.
4. CONTRACTOR SHALL SUBMIT SHOP DRAWINGS OF EACH SYMBOL FOR APPROVAL.

Sheet 14, 2021 - 531ipm
 H:\p-17133 worrall rd-74th to 79th\04_Dwg\CD\Sheets\X SITE FURNISHING DETAILS.dwg



Emerald Sunshine Elm



Kentucky Coffeetree



Blackgum

Shade Trees



Zelkova

Columnar Tree



Summer Beauty Allium



Sweetspire



Amsonia



Lilyturf



Prairie Dropseed



Feather Reed Grass



Stachys



Autumn Joy Sedum



Species Tulip

Grasses & Perennials